

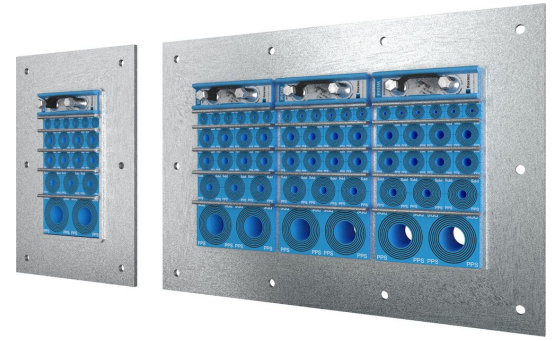


Roxtec GH transit for plastic conduits

Fire rated transit for plastic conduits.

The Roxtec GH for plastic conduits is a transit for bolting onto even structures like steel or sandwich walls/floors where there is a need for a fire rating. The rectangular steel frame allows for routing of conduits with high cable density. The Roxtec RM PPS sealing modules for plastic conduits are marked with corresponding NW size number to simplify installation. RM PPS modules can be combined with regular RM modules for a mix of conduits and cables in the same frame.

- Easy to maintain and inspect
- Provides built-in spare capacity



Product characteristics



Fire rated



IP/UL NEMA

Structure of installation



Sandwich panel



Metal

Mounting type



Bolting

Ratings & certificates

Fire

- E/EI rating according to EN 45545 E60

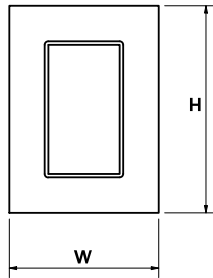
Tightness

- IP 66/67 according to IEC 60529

Frame dimensions

in/lbs

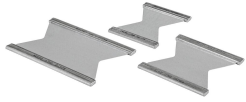
The frame variants below are a limited selection. For the full range of frames and configurations, please visit [roxtec.com](https://www.roxtec.com).

	Product	Frame openings	Packing space	External dimensions WxHxD	Aperture dimensions w x h	Weight	Art. no
	GH 6x1 GALV	1	4.724 x 7.087	9.941 x 13.78 x 2.362	5.827(+0.197/-0.197) x 9.646(+0.197/-0.197)	9.7	5GH0000007882
	GH 6x2 GALV	2	4.724 x 7.087	15.079 x 13.78 x 2.362	10.945(+0.197/-0.197) x 9.646(+0.197/-0.197)	16.5	5GH0000007828
	GH 6x3 GALV	3	4.724 x 7.087	20.217 x 13.78 x 2.362	16.102(+0.197/-0.197) x 9.646(+0.197/-0.197)	22.9	5GH0000008108
	GH 6x1 AISI316	1	4.724 x 7.087	9.941 x 13.78 x 2.362	5.827(+0.197/-0.197) x 9.646(+0.197/-0.197)	10.8	5GH0000008261
	GH 6x2 AISI316	2	4.724 x 7.087	15.079 x 13.78 x 2.362	10.945(+0.197/-0.197) x 9.646(+0.197/-0.197)	16.1	5GH0000008179
	GH 6x3 AISI316	3	4.724 x 7.087	20.217 x 13.78 x 2.362	16.102(+0.197/-0.197) x 9.646(+0.197/-0.197)	21.8	5GH0000009292



Sealing components

Sealing components



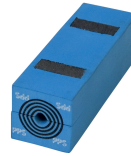
Stayplate



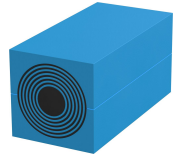
Wedge & Wedge kit



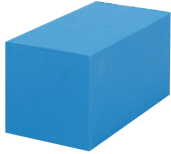
Lubricant



RM PPS module with Multidiameter™



RM module with Multidiameter™



RM solid compensation module

For detailed information, please visit [roxtec.com](https://www.roxtec.com).

The product information provided by Roxtec does not release the purchaser of the Roxtec system, or part thereof, from the obligation to independently determine the suitability of the products for the intended process, installation and/or use.

Roxtec gives no guarantee for the Roxtec system or any part thereof and assumes no liability for any loss or damage whatsoever, whether direct, indirect, consequential, loss of profit or otherwise, occurred or caused by the Roxtec systems or installations containing components not manufactured by an authorized manufacturer and/or occurred or caused by the use of the Roxtec system in a manner or for an application other than for which the Roxtec system was designed or intended.

Roxtec expressly excludes any implied warranties of merchantability and fitness for a particular purpose and all other express or implied representations and warranties provided by statute or common law. User determines suitability of the Roxtec system for intended use and assumes all risk and liability in connection therewith. In no event shall Roxtec be liable for indirect, consequential, punitive, special, exemplary or incidental damages or losses.

The Roxtec products are offered and sold in accordance with the conditions of the Roxtec General Terms of Sales. The latest version of the Roxtec General Terms of Sales can be downloaded from <https://www.roxtec.com/en/about-us/about-roxtec/general-terms-of-sales/>

We reserve the right to make changes to the product and technical information without further notice. Any errors in print or entry are no claims for indemnity. The content of this publication is the property of Roxtec International AB and is protected by copyright.

This document was generated on: 2025-07-12



Roxtec ® and Multidiameter ® are registered trademarks of Roxtec in Sweden and/or other countries.